



A LOOK **Back**

A LOOK **Forward**

2022



**STAR VALLEY
HEALTH**

INSIDE HIGHLIGHTS

Message From Our CEO	PAGE 2
More Than a Century of Progress	PAGES 4-5
Meet Our Frontline Employees	PAGE 3
Da Vinci Robot Brings Surgical Tech to Star Valley	PAGE 4
Stepping Up to Meet the Challenge of COVID-19	PAGE 7
New Buildings Coming to Alpine and Bridger Valley	PAGE 5

Serving Western Wyoming Since 1904

Star Valley Health has deep roots in western Wyoming. Although we became Star Valley Health in 2018, we have been providing care to friends and family since at least 1904.



In those nearly 120 years we have grown to provide care from Bridger Valley to Kemmerer to Afton to Alpine and towns in between. Today, 445 employees work to provide outstanding care close to where you live.

Star Valley Health has a bright future! **Our vision: To lead in health with unparalleled service and community trust.**

Here's what we mean by that:

- **People.** We'll continue to recruit and hire the very best people to provide the very best care for you.
- **Coordinated care.** We'll establish and strengthen clinics throughout western Wyoming to give you seamless care, whether it's urgent care, a visit to a clinic, or at our hospital.
- **Providers.** We'll recruit additional primary care and specialist providers so that we can bring the services you need close to you.
- **Value.** We know you expect to receive quality care. We'll provide that to you for the most reasonable costs.

This community report offers a glimpse into who we are, what we're doing now to help you live your best life, and what you can look forward to in the future. It is our sincere pleasure to serve you.

Dan Ordyna, CEO



STAR VALLEY HEALTH FACTS

Serving Western Wyoming	117 years
Number of Clinic Locations	8
Employees	445
Hospital Beds	29
Care Center Beds	24
Revenues	\$61 million

DID YOU KNOW?

Students from these institutions come to Star Valley Health for their clinical training:

- Brigham Young University, Idaho
- Weber State University
- Western Wyoming Community College



ON THE
FRONTLINE
OF HEALTHCARE
★

The Heart of Our Organization

Our employees are your family, friends, and neighbors and the heart of our organization. We are grateful for their hard work and compassionate care.

You may have seen these faces and read their stories in the newspaper and on our social media. They represent our 445 employees who go above and beyond every day. During 2022 we'll continue to showcase our team who exemplify the spirit of Star Valley Health and a love for our community.

SERVICES

For a complete list of outstanding providers, visit [StarValleyHealth.org](https://www.starvalleyhealth.org).

Cardiac Rehab
Care Center
COVID-19
Testing Facility
Dermatolaogy
Emergency Medical
Services
Family Medicine

Infusion Center
Laboratory Services
Nuclear Medicine
Obstetrics
Orthopedics
Pain Management
Radiology

Sleep Lab
Surgical Services
Therapy Services
Urgent Care
Urology
Women's Health

GET THE LATEST NEWS

Follow us on social media:

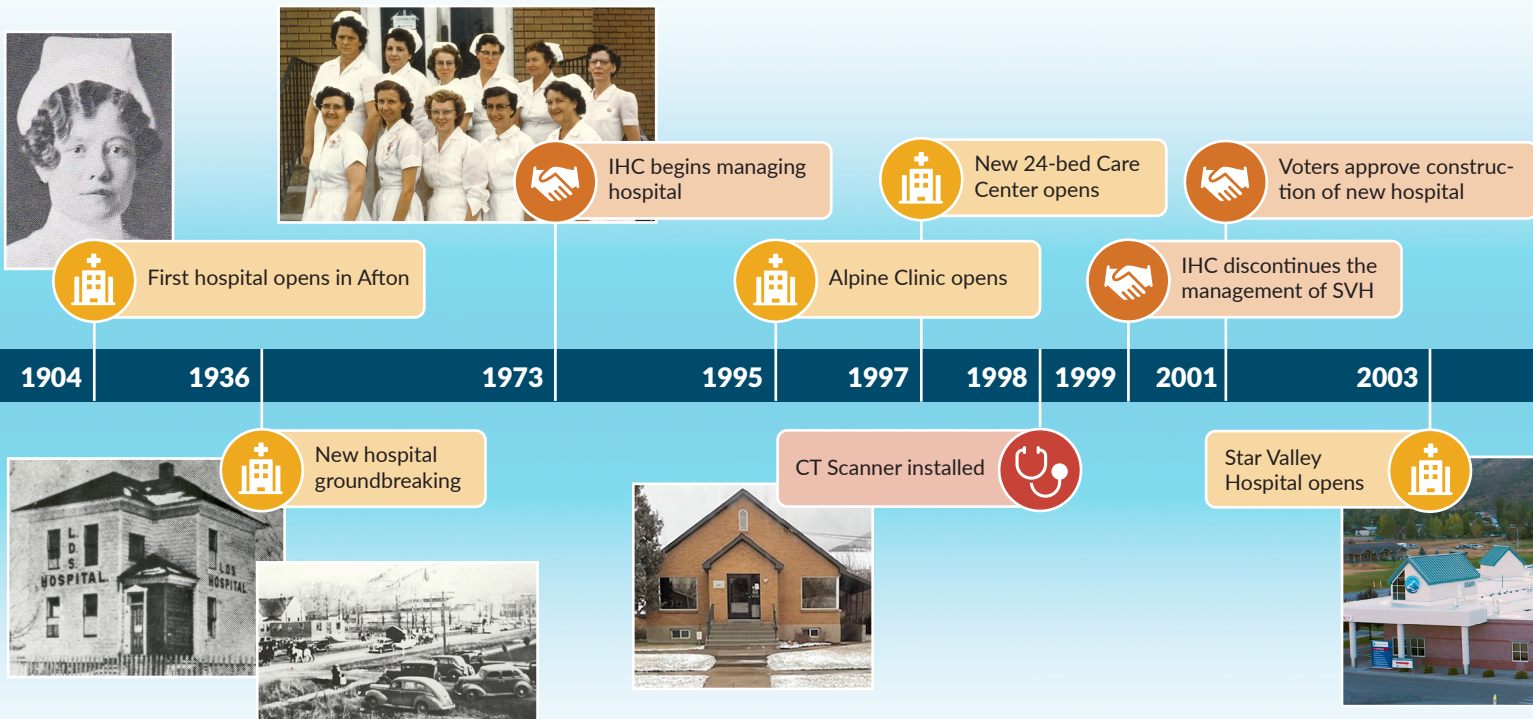


[www.facebook.com/
svhealthwy](https://www.facebook.com/svhealthwy)



[svhealthwy](https://www.instagram.com/svhealthwy)

MORE THAN A CENTURY OF PROGRESS

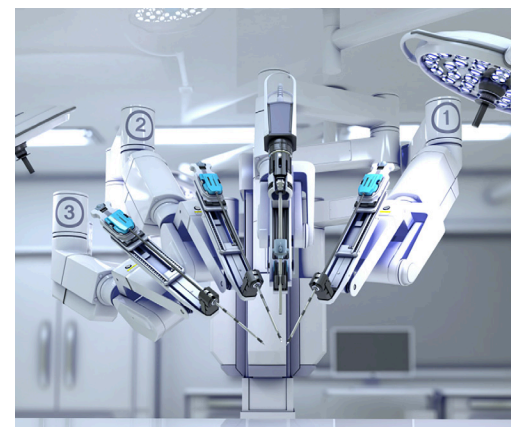


DaVinci Robot Brings the Latest Surgical Tech to Star Valley

With the new system our surgeons will use an advanced set of instruments to perform complex procedures with more precision and accuracy. These small incisions mean less blood loss, less pain, less scarring, and a quicker return home.

Although it's referred to as robotic-assisted surgery, robots don't do the surgery. The tiny wristed instruments are controlled by the doctor and move like a human hand, but with a greater range of motion.

The da Vinci system will be installed and ready to use in February.



EMS Services Merge to Better Serve Star Valley Residents

Star Valley's three emergency medical services have merged into one operating entity under Star Valley Health. Thayne and Alpine EMS will retain their town names on the ambulances and will participate in shared governance of EMS services.

The merger will:

- Ensure 24/7 911 coverage throughout the valley
- Improve response times
- Secure funding for EMS services
- Provide more specialized and uniform care with full-time paramedics in each location





Thayne Clinic opens



Emergency department and surgical center expansion



Former Star Valley Hospital is renovated to become Afton Clinic



MRI Hitachi Machine installed



Star Valley Health Urgent Care opens



Star Valley EMS, Thayne EMS, and Alpine EMS merge

2004

2006

2013

2015

2017

2018

2021



Bridger Valley Urgent Care Clinic opens



OB expansion



New Alpine, Bridger Valley Buildings Will House Additional Services

Alpine Clinic Building

Size: 23,000 square feet

Location: 37 Wintergreen Drive, Alpine

Services: Urgent care, family care, and specialty care with space for future healthcare services

Watch for a public open house this summer!

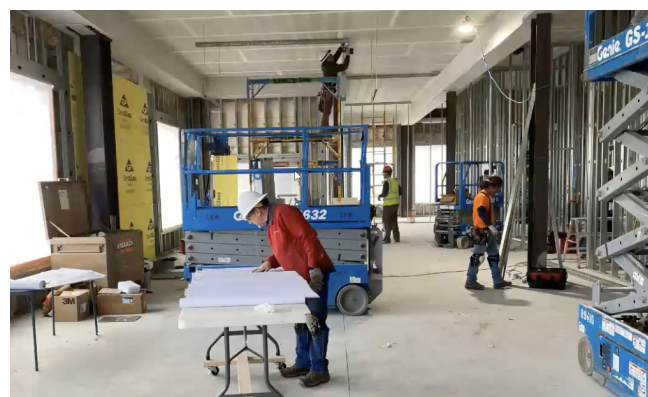
Bridger Valley Clinic

Size: 4560 square foot commercial modular building

Location: In Urie at 39901 Business Loop I-80 near the intersection

Services: Urgent care, family care, and additional specialty care services, including Mountain West Orthopedics and Sports Medicine

Watch for a public open house early spring!

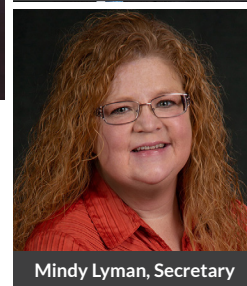




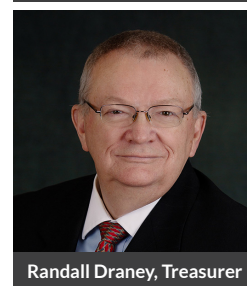
Dr. Andy Orton, Chair



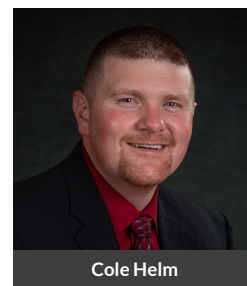
Marlowe Scherbel, Vice Chair



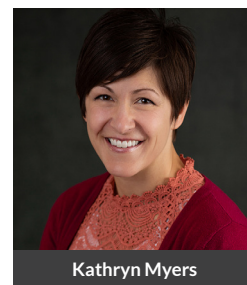
Mindy Lyman, Secretary



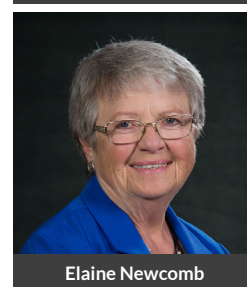
Randall Draney, Treasurer



Cole Helm



Kathryn Myers



Elaine Newcomb

The Future of Star Valley Health is Exciting

Star Valley Health has faced unprecedented challenges over the last year or so.

The ongoing pandemic has reinforced what amazing people we have working for Star Valley Health. The treatment and testing involved in taking care of our community has been and continues to be nothing short of remarkable.

I can't thank enough the Board of Trustees, administration, providers, and staff of all departments and clinics for the dedication and service provided. With relatively minor interruptions of specific treatments, Star Valley Health continues to provide excellent care.

The future for Star Valley Health is exciting as we look to provide the best possible care for our wonderful patients:

- We have hired **the right CEO, Dan Ordyna**, to lead us. He has a vision for the future and works tirelessly to make it so.
- We continue to evaluate the needs of the community and are currently working to **recruit and add needed services**.
- We have broken ground on a new clinic in **Alpine** and a new building is coming to our clinic in **Bridger Valley**.
- Many of the clinics have recently been updated.
- Additional services have been added. (See article on our soon-to-arrive **DaVinci robot** on page 4.)
- Our **quality of care** continues to improve.
- Our **financial health** is strong.

Thank you for allowing us to care for you and your needs. Our commitment is to always improve, and we work daily to achieve that goal.

Dr. Andy Orton
Star Valley Health Board Chair



STAR VALLEY HEALTH FINANCIALS

Fiscal Year 2021

REVENUE

Inpatient Services	\$ 21,935,491.00
Outpatient Services/Clinics	\$ 54,562,858.00
Long Term Care Services	\$ 1,613,900.00
Total Operating Revenue	\$ 78,112,249.00

DEDUCTIONS FROM CHARGES

Contractual Discounts	\$ 20,082,092.00
Noncollectible Accounts (bad debt)	\$ 2,000,936.00
Charity Care and Community Benefit	\$ 246,499.00
Total Deductions	\$ 22,329,527.00

TOTAL NET PATIENT SERVICE REVENUE **\$ 55,782,722.00**

ADDITIONAL FUNDING RECEIVED

County Property Taxes	\$ 927,809.00
Other Income	\$ 4,286,146.00
Total Additional Funding Received	\$ 5,213,955.00

TOTAL REVENUE **\$ 60,996,677.00**

EXPENSES

Employee Wages/Benefits	\$ 37,817,292.00
Supplies, Medications, Insurance, Utilities	\$ 17,289,685.00
Other Expenses	\$ 2,735,931.00
Total Expenses	\$ 57,842,908.00

NET CHANGE IN POSITION **\$ 3,153,769.00**

Stepping Up to Meet the Challenge of COVID-19

COVID-19 has upended our lives and strained our resources. Yet, through it all, Star Valley Health employees have stretched, adapted, and risen to the challenge.

Here are some ways:

- Nurses have worked extra hours and taken extra shifts while often working in hot, uncomfortable protective gear day after day.
- Prompt, accurate COVID-19 testing. Our laboratory staff learned new instruments, developed all required skills, and achieved higher test volumes to exacting standards.
- When hospital staff get COVID-19 or are exposed, quarantining means others pick up the load. Even with challenges, our radiology department performed a record number of procedures during 2021.
- How do you care for everyone else while you're treating COVID-19 patients? Our urgent care clinics stepped up to treat other respiratory infections as well as tackle the community's urgent health care needs.
- Can you imagine the knowledge and skill required to accurately clean hospital areas infected with COVID-19? Our environmental services team minimized the spread throughout the hospital.

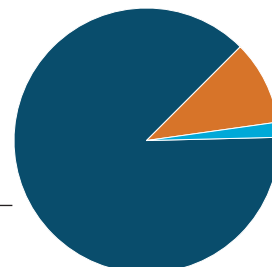
We honor these frontline heroes for the amazing work they do.

WHERE DOES OUR FUNDING COME FROM?

The \$927,000 Star Valley Health receives from the property tax levy does not even cover our nearly \$3 million in bad debt, charity care, and EMS subsidy.

Patient Care: \$56.2 Million
Other Revenue: \$4.3 Million
Lincoln County Property Tax Levy: \$927,000

Total Revenue: \$61.5 Million





The Work of our Charitable Foundation

The Star Valley Health Charitable Foundation would like to thank each of you—donors, patients, and friends—for your support as we continue to recover from the COVID-19 pandemic and move toward the future. Your support helps Star Valley Health as we strive to “achieve everyone’s best health.”

We hear people say they want to return to normal, and so do we, but we don’t just want to return to normal, we want to go beyond normal and reach new heights.

How Your Gift Helps

As Star Valley Health raises the bar for health care in western Wyoming, the Charitable Foundation assists through the generosity of your gifts. In the past your gift has provided funds for:

- an ultrasound machine
- renovations to the labor and delivery rooms and nursery room
- emergency room improvements
- surgical department
- purchase of the business services building
- care center equipment
- therapy services equipment
- scholarships
- infant security system
- mammograms for local, uninsured women
- patient monitoring/medication distribution system
- and more

The Foundation helps bridge the gap so that equipment and services can be upgraded to meet your needs. There are many ways to strengthen the future of Star Valley Health. Be confident that your gift, no matter the size, will provide enhanced healthcare to our community.

HOW TO GIVE

There are a variety of ways to donate to the Star Valley Health Charitable Foundation. You can go to our website at starvalleyhealth.org/foundation/ or send a check or contact us at:

Star Valley Health Charitable Foundation
901 Adams Street | Afton, WY 83110

(307) 885-5950



**STAR VALLEY
HEALTH**

901 Adams Street | Afton, WY 83110

Indicia
Here